



ARES & RACES Orientation  
EOC Overview  
SET Exercise  
14OCT2023



# References

- [Cherokee County ARES Operations Manual](#)
- [ARRL ARES – Field Resource Manual](#)
- [Field Operating Guides, including AUXFOG](#)



# Welcome

## **Welcome to the Cherokee County, Georgia Amateur Radio Emergency Service®**

- While amateur radio is a hobby, we encourage you to participate in our weekly nets, various drills/exercises throughout the year, and be prepared to answer the call from our community when emergency communications are needed.
- We are NOT storm-chasers, nor are we First-Responders.
- We are a dedicated group of amateur radio operators that follow the chain of command.
- We deploy only when requested by our served agency, and only when approved by your Emergency Coordinator of Cherokee County, or one of the delegated Assistant Emergency Coordinators.
- We encourage you to participate and give back to your community and remain prepared to answer the call to service when requested.



# Mission

Cherokee County ARES supports our primary served agency, Cherokee County EMA- Emergency Management Agency and when requested other agencies in our area or NW GA District.

We annually support the following activities:

1. [Field Day along with our Club-WX4CAR.ORG](http://WX4CAR.ORG)
2. [The Georgia Death Race](#)
3. [The Georgia Jewel](#)
4. [NW GA District ARES](#)
5. **The Annual ARRL Simulated Emergency Test (SET)**
6. As needed [SKYWARN](#) nets



# ARES Organization

The American Radio Relay League's Amateur Radio Emergency Service is divided into four levels, national, section, district and local.

- There are 71 sections in the USA.
- The Georgia section is broken into 8 districts that are illustrated below
- Our group is part of the Georgia Section, Northwest District.
- Each of Georgia's 159 counties has an Emergency Coordinator.

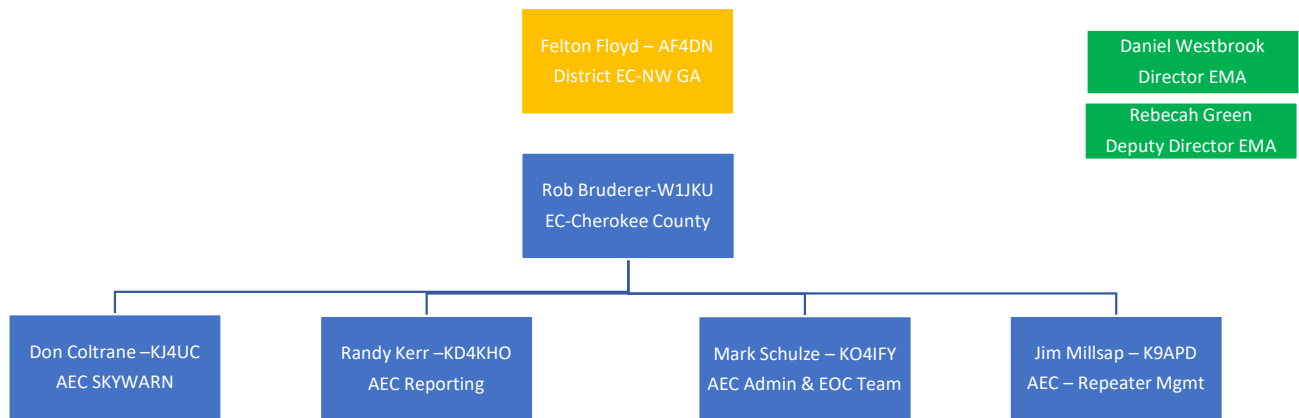


## Georgia Section Northwest District

Bartow
Catoosa
Chattooga
Cherokee
Dade
Fannin
Floyd
Gilmer
Gordon
Murray
Pickens
Polk
Walker
Whitfield

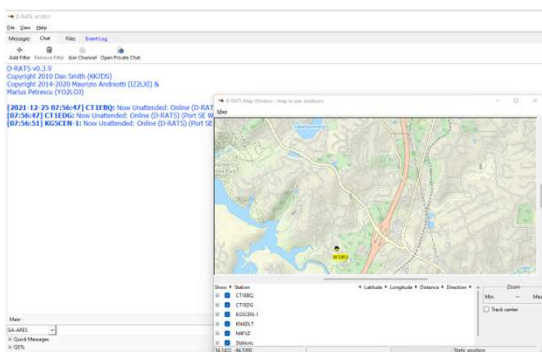


# Cherokee County GA Organization



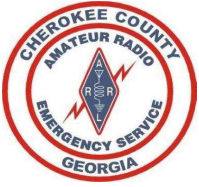


# Training



General Message (ICS 213)			
<a href="#">Load ICS213 INITIAL Data</a>		<a href="#">Form Instructions</a>	
1. Incident Name: <input type="text" value="Incident name is optional"/>			
2. To (Name/Position): <input type="text"/>			
3. From (Name/Position): <input type="text"/>			
4. Subject: <input type="text"/>		5. Date: <input type="text"/>	6. Time: <input type="text"/>
7. Message: <input type="text" value="Be Brief and Concise"/>			
8. Approved by: <input type="text"/>		Position / Title: <input type="text"/>	
<a href="#">Save ICS213 INITIAL Data</a>	<a href="#">Submit</a>	<a href="#">Reset Form</a>	Ver 41.11





# ARES LEVELS

- **Level 1 ARES**
- **Level 2 ARES** (Deployable)
- **Level 3 ARES** (EC, AEC, and EMA Staff)
- All ARES members are expected to establish and complete ARES Training as outlined in the [ARRL ARES Standardized Training Task Book](#). These task cover basic activities/principles that you as a radio operator must become proficient in performing.
- (No Worries, We will help you gain the experience you need!)



# FEMA Training

- Our operations must comply with the National Incident Management System (NIMS). We operate under the Incident Command System (ICS) when activated.
- The Department of Homeland Security (DHS) requires all volunteers, including Amateur Radio operators to be certificated in at least IS 100, IS 200, IS 700 and IS 800 course material.
- For non-governmental employees and others without access to classroom instruction, these courses are available as on-line independent-study courses that are free of charge.
- **Required for ARES Level II**  
The required FEMA training (as well as a lot of other optional training) is available on-line at the following web site: <http://training.fema.gov/is/crslist.aspx>.

IS-100, Introduction to the Incident Command System

IS-200, ICS for Single Resources and Initial Action Incidents

IS-700, National Incident Management System (NIMS), An Introduction

IS-800, National Response Framework, An Introduction



# ARES Commitment

**To Remain in an “Active” Status in Cherokee ARES, requires a small commitment from you.**

Our Served Agency must have confidence we are prepared to support our community when called upon.

## **Requirements:**

- Attends minimum of 2 Monday Night Cherokee ARES/SKYWARN Nets per Quarter
- Attends minimum of 2 Tuesday Night NW GA District ARES Nets per Quarter
- Attends minimum of 1 Drill/ARES Exercise per year. (Field-Day, GA Death Race, GA Jewel, GA SET, or Real-World Activation)

***\*\*\* Preference is for you to attend as many of these exercises that you can, but we understand you must balance your personal life as well...***



# Net Communications

## ***Ground Rules for participating during a Directed / Formal Net:***

- During a Directed Net, Only use the frequency for official traffic
- **LISTEN.** The **Net Control Station** (NCS) will provide instructions on how to check into the net and what is expected during net activities
- Follow the net protocol established by the NCS
- Report in to the NCS promptly when you arrive at your station
- If you need to talk to someone directly, ask the NCS for permission
- Answer promptly when called by the NCS
- If you leave your station during a Directed Net, Inform NCS
- Do not utilize Q-Signals, 10 Codes, etc. speak normally in clear language. For Example, do not use *QSL* to Acknowledge a message, instead use the word, '**Acknowledge-Over**'. This is important as we will be working with many different Served Agencies and the communications must be fully understood by all parties. (Including National Weather Service, MARS, American Red Cross, Georgia Emergency Management Agency, Local County and City agencies, etc.)



# Common Prowords

Below is a list of Common Prowords we shall utilize. Emergency Communications requires clearly spoken language to avoid any confusion or miss-interpretation of meaning:

- **CORRECT / WRONG.** The proword **CORRECT** means "what you transmitted is correct". The opposite is **WRONG**.
- **NEGATIVE / AFFIRMATIVE.** The proword **NEGATIVE** means "No". The Opposite "**AFFIRMATIVE**" meaning "Yes".
- **SAY AGAIN.** The proword **SAY AGAIN** is used to request a repetition of something that was transmitted. The Proword **I SAY AGAIN** means I am about to restate something I have already transmitted.
- **WAIT and WAITOUT.** The proword **WAIT** is used when a pause is required and will last less than five seconds. Wait should not be over-used; you may simply pause a second or two without saying it. **WAIT OUT** means I must pause for longer than five seconds before continuing/responding, in the meantime other stations can transmit as normal.
- **WILCO.** The proword **WILCO** is a contraction of the phrase "will comply". It is used in response to a request or tasking and means that you understand the tasking and agree to accomplish the task. Because it implies you understand the request, it is never used with the proword **ROGER** as that would be redundant.
- **OVER.** The proword **OVER** means, I have finished my transmission, go ahead and transmit.
- **OUT.** The proword **OUT** means, I have concluded my transmission, no reply is expected.
- **ROGER.** The proword **ROGER** means, "I have received the information by you" without indicating approval or disapproval, agreement or disagreement. Do not confuse **ROGER** for **WILCO**.
- **THIS IS.** The proword **THIS IS** means, "The current transmission is from the station who's call sign follows." This proword can be omitted after communications are established.
- **THIS IS A DIRECTED NET.** This proword **THIS IS A DIRECTED NET**, spoken by NET Control, means that until further notice the NET is directed. This means that all stations need permission of NET CONTROL to call other stations. The Opposite is **FREE NET**. In a **FREE NET**, any station may call any other station without NCS Permission.



# Passing Formal Traffic

- During an emergency, precise message handling is critical. It is important to record and pass on messages quickly and accurately
- Keep Transmissions to a minimum.
- Avoid Spreading Rumours – Don't expand or speculate on what you may hear on the air or while in the presence of officials.
- All "official messages" should be written and signed by the originator.
- Send formal traffic EXACTLY as you received it. Don't correct it, change it, elaborate, or try to interpret it. Ask for clarification before Sending
- Copy it as you received it. Send it as you were requested.
- Use the right mode and band to suit the need.



# Weekly Training NETS

- We are fortunate to have various local, state, and regional weekly nets available to our teams.
- To help prioritize the nets for the Cherokee ARES teams, we are requesting that we participate, as time allows, on the Cherokee ARES, Cherokee CARS, and NW GA ARES weekly nets.
- By keeping focus on our County and District we are better able to mutually support one another during an activation or incident.

## Monday

### Cherokee ARES /SKYWARN

- 20:00 hours Net starts on WA4EOC Repeater (443.075 + PL 107.2) and Alternate Repeater KG4VUB (145.270 - PL 100.0)

**WX4AUX 145.190 – PL 107.2 will become primary Repeater in the coming weeks**

## Tuesday

### [NW GA ARES DISTRICT](#)

- 1<sup>st</sup> Tuesday 19:30 District Simplex Net (Check [NW GA ARES District Facebook](#) weekly)
- NLT 20:00 Winlink Net – Send Winlink Check-in form to W4NWG
- 20:00 hours Net starts on KC4AQS Repeater 146.805 + PL 100.0 (Additional Instructions will be provided on the net or [NW GA ARES District Facebook](#))
- Exercises varies including:
  - DSTAR using REF030B
  - Winlink (Telnet/Vara/Packet) to W4NWG
  - Winlink P2P- TBD
  - Simplex Testing VHF/UHF/HF- Based on weekly exercise
  - DRATS

## Thursday

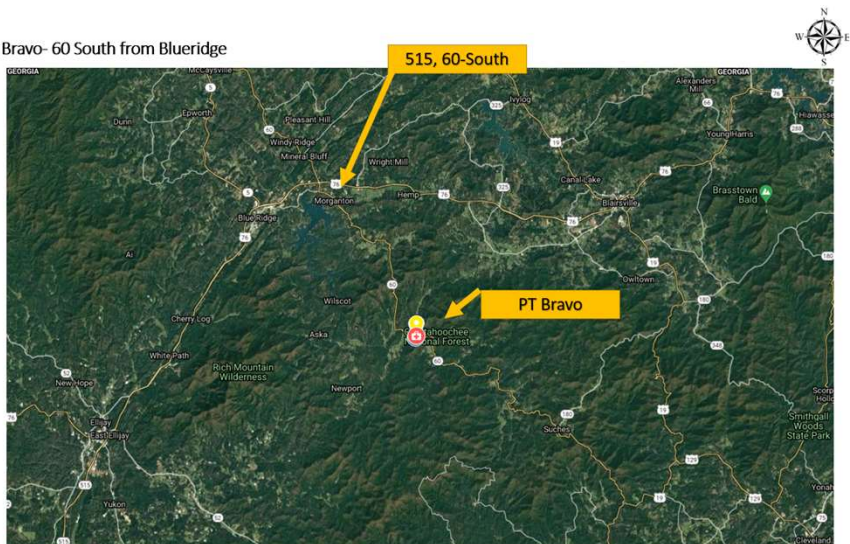
### Cherokee Amateur Radio Society Club Net ([WX4CAR](#))

- 20:00 EST via KG4VUB Repeater (145.270MHz - PL 100Hz encode and decode)



# Activation

Point Bravo- 60 South from Blairidge







# Activation of Cherokee ARES

- CC-ARES activations for the EOC are initiated by the EOC Staff by notifying the EC or designated AEC(s). An email is sent via e-mail distribution using [Cherokee ARES Groups.IO](#)
- Typical activation will be through the emergency net on the designated repeaters.
  - CC-ARES members should monitor WX4AUX/WA4EOC/KG4VUB during severe weather or local major events for the standup of SKYWARN or Informal nets.
  - If capable also monitor KC4AQS for reporting requests and real-time information provided from National Weather Center out of Peachtree City GA.
- Email notification to Cherokee ARES members and teams will attempted to be sent through the [Cherokee ARES Groups.IO](#) by the EC or AEC(s).
- Last mile, if required, voice-calls and or test messages sent to your cell phone on file with Cherokee ARES will be used.



# Activation Procedures

1. Establish an ICS-214 Activity Log. Record your activation date/time, any major significant event that occurs, and when mission is over, record the deactivation date/time.
2. If instructed by your chain of command to deploy, report your departure to the mobilization site and arrival. On demobilization, record the time you leave the area and report to your home station.
  - This is important for accountability.
  - Report these major milestones to your leadership via Voice, Text, Email, any method you can for near real-time tracking.
3. Follow the deployment and demobilization instructions you are provided.
4. Upon completing the mission, develop an After-Action Report.
  - Identifying areas to Improve as well as Sustain.
  - We must take advantage of every opportunity to identify areas to improve before next activation.
  - Submit that report to your Emergency Coordinator and team leader if assigned.



# SKYWARN

Cherokee Skywarn Coordinator: Don-KJ4UC





# SKYWARN

- The majority of SKYWARN activity in the State of Georgia is coordinated through the NWS Peachtree City (NWS-PTC) office in Peachtree City.
- The amateur station [WX4PTC](#) is located at the National Weather Service office in Peachtree City, GA.
- You will find during severe weather, [WX4PTC](#) may link to one of our local Repeaters KC4AQS and/or W4DOC.
- When this occurs listen carefully to the information [WX4PTC](#) is broadcasting or requesting, while also monitoring our local Cherokee County SKYWARN net.
- Do Not interrupt a SKYWARN net or provide information that does not meet the criteria that WX4PTC is requesting. Follow the guidance of Net Control. Many times, just listening is all you need to do and then share on our own Cherokee ARES SKYWARN net.
- WX4PTC is looking for critical ground truth to overlay with additional reports or radar indicated activity, in order to adjust the National Weather Service alerts for the affected area.



# Frequencies

The screenshot shows a radio software interface with a dark theme. At the top center, the frequency "443.075.000" is displayed in large white digits. Below this is a horizontal frequency scale for the 160m band, with markers every 0.2 kHz from 443.073.8 to 443.079.2. Below the scale are buttons for various filter widths: 160m, 50m, 60m, 40m, 30m, 20m, 17m, 15m, 12m, and 10m. The interface also shows other frequency bands (10m, 12m, 15m, 17m, 20m) with their respective scales. On the right side, there are several control buttons: ATU, NR, TX, VOX, Mode FM, Comp, Notch, Tone, VSC, Filter: FL1, Lock, Power, Tune, AGC: Fast, Man, Split, V-all, ATT: Off, Moni, TPF, V-frq, Pre-Amp: 1, NB, TSQL, V-ri. On the left side, there are buttons for VFO A, MEM, A-B, M&gt;V, VFO B, MW, A&lt;&lt;B, and M-CH. At the bottom, there are several sliders and buttons for AT gain (49), RF gain (100), Filter width (0), F shift (0), RF power (100), PBT inside (0), PBT outside (0), NR level (25), NB level (0), Monitor gain (40), Notch (0), and Squelch (19). The date and time "Saturday, December 25, 2021 07:51:35" are displayed in the top right corner of the interface.



# Frequencies

- It is requested that you load the frequencies contained in our ICS-217 Communications Availability Worksheet in your radio, prior to an incident/activation, so that you are prepared at time of activation.
- We have various code-plugs available for download, or we can assist you, if necessary, load your radio.
- The ICS-217 has frequencies for Cherokee ARES (UHF, VHF), GA ARES HF, WINLINK, and NW GA District and Surrounding Counties.
  - Your Primary Channel for Cherokee County ARES will become **WX4AUX 145.190 - PL 107.2**  
**Training Sessions will begin testing this repeater. In coming weeks we will make the switch....**
  - Your Alternate Channel for Cherokee County ARES are WA4EOC.
  - Your 3<sup>rd</sup> Alternate Channel for Cherokee County ARES is KG4VUB.
  - The remaining Channels will be used as needed.
  - DSTAR- Will not be used for NET, but a tool to communicate outside region (REF030B, etc)

	Receive Frequency	Transmit Frequency	Offset Frequency	Offset Direction	Repeater Use	Filter	Name	Sub Name	Rpt-1 CallSign	Rpt-2 CallSign	LatLng	Latitude	Longitude	UTC Offset
3	145.190000	144.590000	600 kHz	DUP-	<input checked="" type="checkbox"/>	Filter 1	WX4AUX C	D-STAR	WX4AUX C	WX4AUX G	Approximate	34°19'11"N	084°33'54"W	+05:00



# Computer Applications

1. Winlink. Winlink is used to send emails and various forms between Ham Operators. All ARES members are requested to install and configure Winlink, as a minimum using "Telnet"/Internet to send and receive messages.
  - If you can connect your computer to your radio (Advanced Task), then you can send and receive important messages without any dependence of the internet. This will become a valuable method of communicating when we have an internet disruption or if you are deployed to a location with no Internet/Cell service. (AKA one of our annual events in the mountains of North Georgia).
2. D-RATS. D-RATS is a tool for real-time Instant Messaging between Ham Operators. All ARES members are requested to install and configure Winlink, as a minimum using "Telnet"/Internet to send and receive messages. There is as Advanced Task where if you have a DSTAR Radio or TNC, you can send/receive D-RATS messages without the reliance of the Internet.
3. APRS. APRS will be used to provide quick updates as needed via RF/Internet

\*\* (FLDIGI at this time will not be adopted by Cherokee due to complexity & message delivery instability)

**Additional Details and training links will be found on the [Cherokee-ARES.ORG](http://Cherokee-ARES.ORG) webpage**



## RACES- the Radio Amateur Civil Emergency Service

- Founded in 1952, the Radio Amateur Civil Emergency Service (RACES) is a public service provided by a reserve (volunteer) communications unit within government agencies in times of extraordinary need. During periods of RACES activation, certified unpaid personnel are called upon to perform many tasks for the government agencies they serve. Although the exact nature of each activation will be different, the common thread is communications.
- RACES, almost never starts before an emergency and is active only **during the emergency and during the immediate aftermath if government emergency management offices need communications support**. RACES is normally shut down shortly after the emergency has cleared.
- In the event that the President invokes his War Emergency Powers, amateurs involved with RACES might be limited to certain specific frequencies (while all other amateur operation could be silenced).
- RACES Operators must be registered with the local emergency management agency





# ARES and RACES Comparison



ARES	ARES	RACES
<b>Activation</b>	Operations can take place in advance of an emergency, during the emergency, and an indefinite time after the emergency has cleared.	Except for drills, starts as a result of an emergency, active during the emergency, and deactivated shortly after the emergency has cleared.
<b>Operator Registration</b>	Does not have to be registered. Suggested to register with local ARES Emergency Coordinator.	Must be registered with the local emergency management agency.
<b>Communications</b>	Limited only by standard Amateur Radio rules.	Restricted to/from other RACES stations.
<b>Messages</b>	Limited only by standard Amateur Radio rules. Example: Health and Welfare would be allowed in ARES, but may not be allowed in RACES.	Communications must be specifically authorized by the civil defense organization for the area served. Generally limited to public safety, immediate safety of life of individuals, the immediate protection of property, maintenance of law and order, alleviation of human suffering and need.
<b>Drills</b>	Limited only by standard Amateur Radio rules.	Cannot exceed a total time of one hour per week. With proper authorization, drills may be conducted twice in a calendar year for a period not to exceed 72 hours.
<b>Served Agencies</b>	Emergency management organizations as well as other non-profit organizations.	Limited to emergency management organizations.
<b>Restricted Operations</b>	May be restricted from operating in some communication emergencies.	May be allowed to operate in a communication emergency when other amateur radio stations are restricted from doing so.

[Reference: RACES vs. ARES | Steele County Emergency Management](#)



# Reminder to Register

- Submit your FSD-98 and RACES to Register Form for Cherokee to **W1JKU and KO4IFY**
- Submit your Certificates of Training to **W1JKU and KO4IFY**
- On Monthly Basis, Sign the ARES Sign-in Roster at our Meetings and verify your Contact Information is correct



Cherokee County  
Amateur Radio Emergency Service@  
ARES Registration Form



Name:	
Call Sign:	
Mailing Address:	
City, State, ZIP code:	
Grid Square:	
E-mail address:	
Home phone number:	
Work phone number:	
Ham Shack Hotline:	
Cell phone number:	
License Class:	
License Expiration:	

MODE	80M	40M	20M	10M	6M	2M	1.25M	.70CM	900Mhz	1.2 Ghz
SSB										
CW										
FM										
DATA										
PACKET										
Winlink										
D-Star										
"Go Box"										
Portable HT										
Mobile										
Home										

Can your home station be operated without commercial power? Yes [ ] No [ ]  
 May we include your contact information in our membership listings? Yes [ ] No [ ]

Signature \_\_\_\_\_ Date \_\_\_\_\_  
 (Your typed name will serve as signature)

Contact: Rob Bruderer, Emergency Coordinator-Cherokee County ARES at W1JKU@ARRL.NET  
 Information on this document will not be released to anyone without your permission as indicated above.  
 Learn about ARRL sponsored Amateur Radio Emergency Communications Courses:  
<http://www.arrl.org/ices/>  
 CC ARES FSD-98 (01/2022)



Cherokee County  
RACES Registration Form  
"Amateur Radio Volunteers for Community Emergency Communications Service"

Name:	
Call Sign:	
Mailing Address:	
City, State, ZIP code:	
Grid Square:	
E-mail address:	
Home phone number:	
Work phone number:	
Ham Shack Hotline:	
Cell phone number:	
License Class:	
License Expiration:	

MODE	80M	40M	20M	10M	6M	2M	1.25M	.70CM	900Mhz	1.2 Ghz
SSB										
CW										
FM										
DATA										
PACKET										
Winlink										
Telnet										
Winlink VARA										
PACKTOR										
FLDIGI										

Can your home station be operated without commercial power? Yes [ ] No [ ]

Signature \_\_\_\_\_ Date \_\_\_\_\_  
 (Your typed name will serve as signature)

Contact: Rob Bruderer, Emergency Coordinator-Cherokee County ARES at W1JKU@ARRL.NET  
 CC RACES (01/2022)



# After Registration

1. You will be added to the [Cherokee ARES Groups.IO](#)
  - Please follow the steps in the email you receive to accept the invitation, and please set your name in Groups.IO as Firstname + Callsign
  - This specific page is limited for Cherokee ARES training, Activations, and Upcoming ARES Events.
  - For Non-ARES related postings use the WX4CAR Club Groups.IO Page [Cherokee-Hams.groups.io](#)
2. You can then request access to the [Cherokee ARES Facebook Page](#), which for short message/reminders. Only ARES members will be admitted to the page. (Facebook is not mandatory, just another tool in the toolbox to help notify members)
3. Please access and make a favorite on your web-browser: the [Cherokee ARES Website](#). This is the official site for complete listing of our Operations Manual and important details of our Organization.
  - Please Establish your own Binder that includes the Cherokee ARES Operations Manual
  - Please Print 10 Copies of each of the Blank ICS Forms, so you have them available during an incident
  - Please Check the website at least quarterly for updates. (If we make a major update to this site, we will post a notification on the Cherokee ARES Groups.IO page as a reminder).
4. Participate in Weekly NETS and Exercises

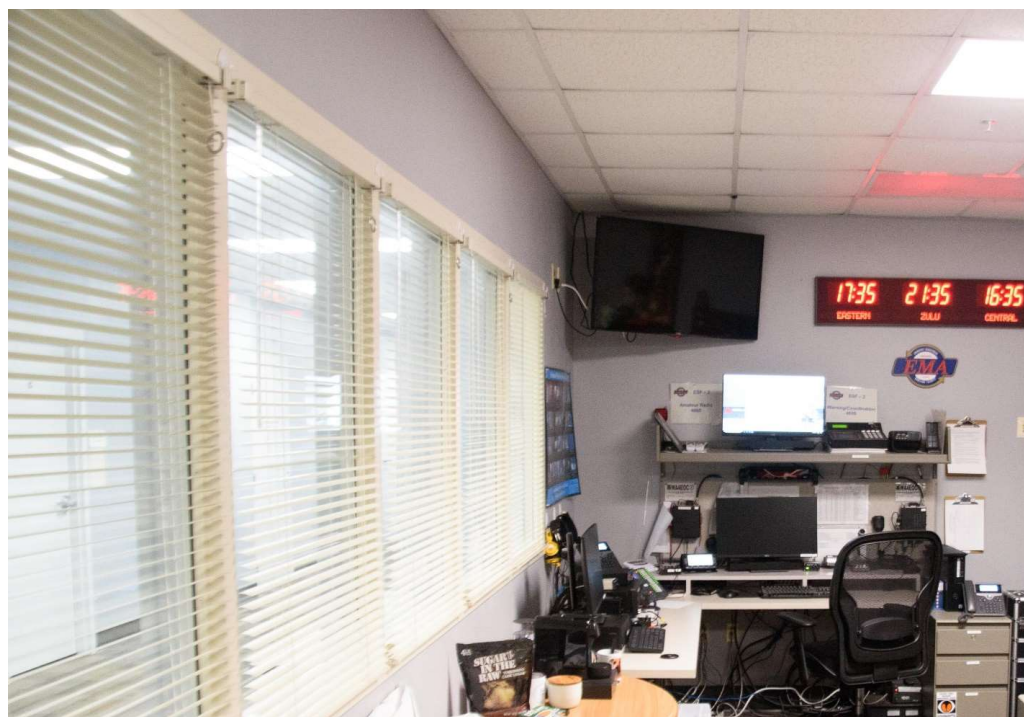


# EC and AEC Contact Information

Position	Name	Call Sign	Email:
EC	Rob Bruderer	W1JKU	<a href="mailto:w1jku@arrl.net">w1jku@arrl.net</a>
AEC (Admin/Registrations)	Mark Schulze	KO4IFY	<a href="mailto:ko4ify@arrl.net">ko4ify@arrl.net</a>
AEC (Reporting)	Randy Kerr	KD4KHO	<a href="mailto:kd4kho@comcast.net">kd4kho@comcast.net</a>
AEC	Jim Millsap	K9APD	<a href="mailto:k9apd@comcast.net">k9apd@comcast.net</a>
AEC (Skywarn)	Don Coltrane	KJ4UC	<a href="mailto:kj4uc@arrl.net">kj4uc@arrl.net</a>



# EOC Team & Operations



# EOC Activations Likely in Coming Weeks

- As Winter weather approaches, we can expect to activate at the EOC as well as from our homestations feeding information to the EOC from across Cherokee County.
- Plan for 12hour shifts
- Plan for extended stay if weather is bad
  - Bring snacks/etc, however EOC will take care of all personnel that activate
- Volunteer to join the EOC Team- Contact W1JKU, KJ4UC, or KO4IFY
- **Current EOC Team:** W1JKU, KJ4UC, KO4IFY, KD4KHO, KO4PWB, KO4UQF, WX4WCS, K9APD

# ARES and EOC Access

- Cherokee County has given W1JKU Access to use the facility at any time.
- We will operate as a minimum 1 Net per month from the EOC to ensure all equipment remains operational.

# Ground Rules/ General Orders

1. You will be instructed on where to report when you are requested to deploy to the EOC. When you arrive, you may be issued a visitor badge if required by EMA staff.
2. You will dress professionally when reporting to the EOC.
3. You will act professionally at all times and treat others with utmost respect.
4. If there is a misunderstanding or disagreement with other members located at EMA, notify your chain of command, and DO NOT engage in divisive discussions, arguments, etc.
5. Do Not bring visitors or guest to the EOC, they are not authorized at this facility.
6. Keep your voice down, so that you are not distracting anyone else at the EOC.
7. All radios will be run with headsets or speakers on low volume so that others do not hear our traffic and we become a distraction versus an asset.
8. Zero Tolerance for alcohol or weapons at the EOC. Failure to comply may result in an extended stay behind the secure fence and will result in termination from ARES and Cherokee County Amateur Radio society.
9. Plan on bringing snacks, lunch, and a water bottle. If the deployment is extended, the EOC will provide food and have ample water supply.
10. During an activation, do not park in front of the EMA main doors. Park on the side of the building or across the street as the EMA will be very busy. Enter through the EMA front door where you will be admitted. You will take the Elevator to the ground floor and will be given directions to the EOC room if you are unfamiliar.



# Activation Instructions

1. Upon arriving, you will immediately sign in with the ARES assigned lead and ensure an ICS-214 is established. The ICS-214 will record all ARES members arrival and departure from the facility, and all critical events.
2. If you are required to unlock the ESF2 Radio Room, return key to key box and lock the key box immediately after gaining access to the ESF2 Radio room.
3. Fill out EOC Log recording time you arrived at the EOC. The clipboard is on the wall above ARES file-cabinet.
4. Station Requirements:
  - a. ID5100 Channel A will be configured for the Primary ARES Frequency, WX4AUX/WA4EOC Repeater.
  - b. ID5100 Channel B will be configured for the Alternate ARES Frequency, WA4EOC/KG4VUB Repeater.
  - c. Kenwood TMS700 Channel A will be used for APRS, or Winlink as needed.
  - d. Kenwood TMS700 Channel B will be configured for the KC4AQS Repeater.
  - e. Yaesu FT950 will be configured for 3.975 or designed HF Frequency.
  - f. DRATS will be started on both computers:
    - i. Computer 1- (PS-EMA-6QHFZB3)
    - ii. Computer 2- (PS-EMA-72DL9N2)
  - g. Winlink (Internet/VHF) will be started on Computer 1. The Internet will be used as the primary mode of communication if the Internet is functioning, else VARA-FM or Packet will be used. The computer userid and password can be located on the front of the monitor.
  - h. Winlink (HF) will be started on Computer 2 if needed.
  - i. WEBEOC will be started on both Computer 1 and Computer 2 to ensure we can monitor and report as needed. An ICS-214 will be established for the activated Incident. Significant Events will be logged as necessary. See additional details in this guide for [Reporting Requirements](#) for more details.
  - j. The Cert Radio will be enabled and monitored during activations, and we will remain prepared to communicate with CERT members located at Lake Arrowhead without using HAM Callsigns. We will use the Call-Sign '**Cherokee EOC**' when communicating with Lake Arrowhead Cert.
5. *Cherokee ARES members will not touch the top shelf over Computer 1, as this belongs to the Tornado Alerting System. This shelf will only be used by EMA Staff. Cherokee ARES will not touch the Power Supply labeled for the Tornado Alert System.*

# File Cabinet

The file cabinet to the right of Computer 1 is labeled and reserved for ARES Use Only.

1. Drawer #1, the top drawer, contains the Cherokee ARES Operations Manual, EOC Manual, as well as additional pens.  
Within the tabbed Operations Manual, you will find Preambles for Weekly ARES Net as well as templates for Skywarn Net.
2. Drawer #2 currently contains a few key headphone cables and miscellaneous parts.
3. Drawer #3 contains various blank forms including ICS-211, ICS-213, ICS-214, extra blank writing paper, Band Plan, Blank CCARES Rosters, Laminated ARES Preamble, and a Misc folder.

# Inventory and Key Pictures

Label	Item	Comments
1	Power Supply 01	Powers VHF/UHF Radios
2	Power Supply 02	Powers HF Radio
3	ID-5100	Used for Primary UHF/VHF
3.1	HA400 Behringer Headset Amplifier	Connected to ID5100
3.2	Heil Headset-Mic	Connected to ID5100 with Hand Trigger
3.3	Heil Headset ProSet 3	Connected to ID5100 for Listening Only
4	YAESU FT-950	HF-(Radio Autotunes)
4.1	HA400 Behringer Headset Amplifier	Connected to YAESU FT950
4.2	Heil Headset-Mic to FT950	Connected to YAESU FT950 with Hand Trigger
4.3	Heil Headset ProSet 3	Connected to YAESU FT950 for Listening Only
4.4	Signalink-HF to FT950	VARAHF Winlink Capable
4.5	AT200Pro II LDG AutoTuner	Connected to FT950
5	Kenwood TM S700	Used for A-Winlink B-Open
5.1	Signalink-VHF to Kenwood TMS700	Packet Winlink, VaraFM, and APRS
5.2	Kenwood Desk Microphone to TMS700	Used when needed to communicate via the TMS700
7	Computer 1 (PS-EMA-6QHFZB3)	User: eocuser PW: SkyW@rn!2021 CCARES-GMAIL DRATS WEBEOC
8	Computer 2- EOC Network (PS-EMA-72DL9N2)	User: eocuser PW: SkyW@rn!2021 CCARES-GMAIL DRATS WEBEOC
9	Cert Radio Business Band	Used to communicate with Cherokee CERT/Lake Arrowhead Cert Teams.

# Power Supply 1 & Tornado Sirens

Power Supply 1 and Tornado Sirens we DO NOT Touch!



DO NOT Touch this Tripp-Lite PR-20

#1- Turn On/off

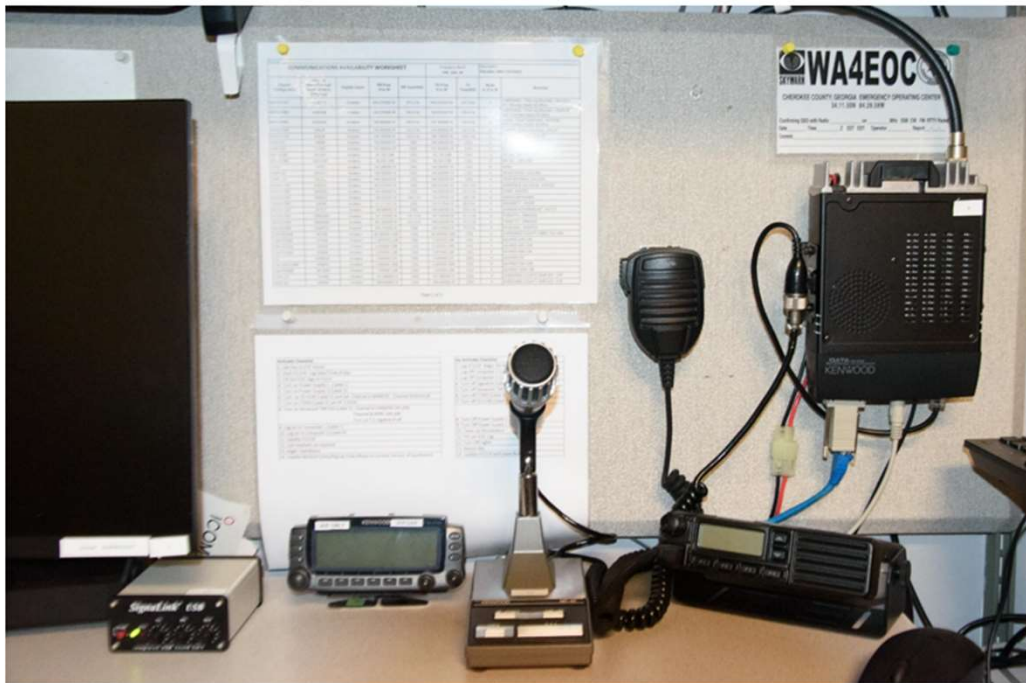
# Power Supply 2 – HF Radio

Power Supply 2



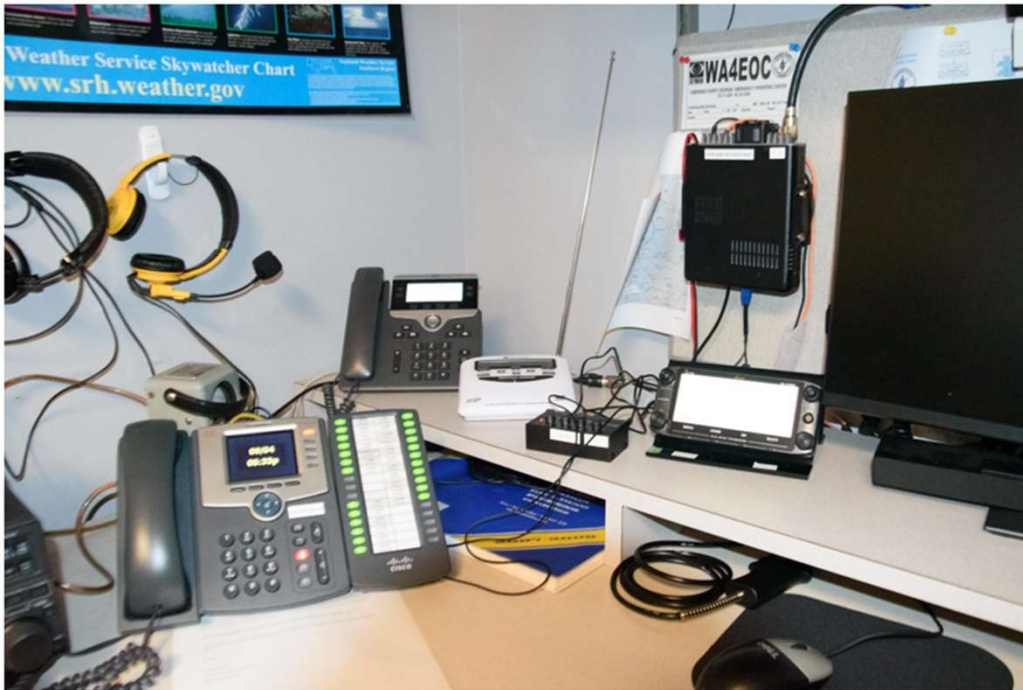
# Kenwood and CERT Radio

Kenwood, Signalink, Desk Mike, and Cert Radio



# ID5100, PC1, ESF2 Phone, and Hamshack HL

ID5100, PC1, ESF2-Phone, and Hamshack Hotline



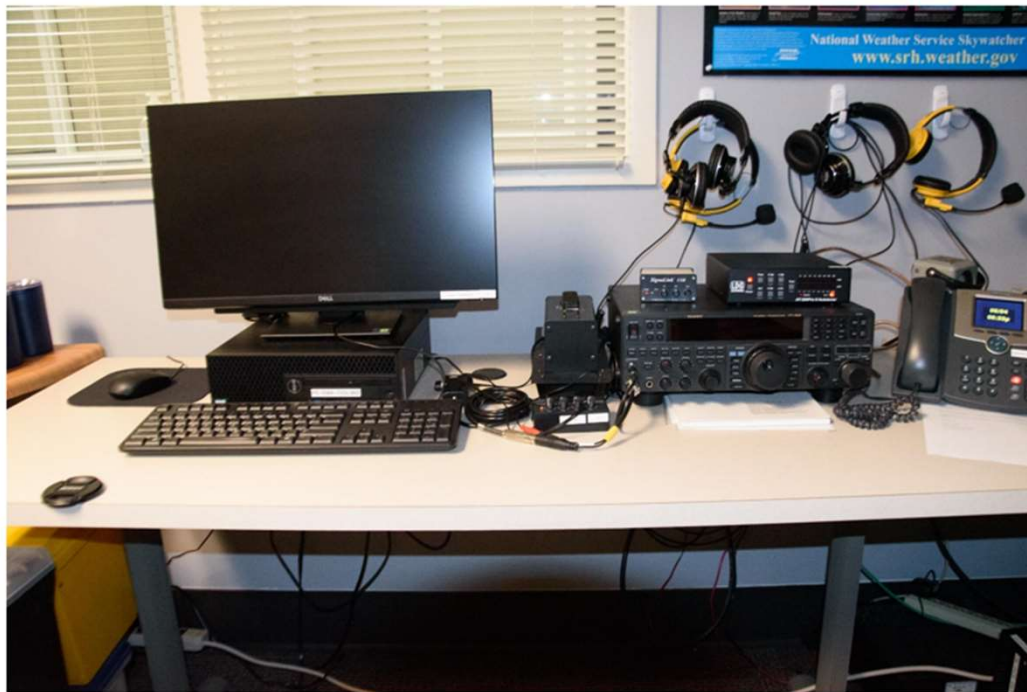
# Headsets





# PC2, Yaesu FT950 (HF)

PC2 and Yaesu FT-950 (HF)



# ARES File Cabinet

ARES File Cabinet (to the left Power Supply 1 and Tornado Warning Power Supply)



# Do Not Touch Shelf (Tornado Warning System)

DO NOT Touch Shelf Above PC1- Tornado Warning System



Cherokee ARES SET

# Cherokee ARES SET – Mobilization Exercise

- Initiate SET from EOC.
- Activate ARES over VHF, APRS, DRATS, Groups.IO.
- Obtain Winlink Check-Ins with Location of each station as well as Operational status of each Operator.
- Deploy Team to William G Long- Mobilization Station to Operate as WX4AUX and assume Net Control.
- Demonstrate to members how to operate remotely on Battery/Solar Power.
- Operate VHF/UHF and HF 6-80m with minimal setup.
- Mobilize all Members to William G Long for Mobilization Accountability, Training, and on Order additional missions

# Cherokee ARES SET – Mobilization Exercise

- Ensure each member has required training records, Operations Manual, Radio, etc.
- Ensure each member has demonstrated required skill to program radio manually with new repeater- WX4AUX.
- Ensure each member received Annual ARES Orientation & EOC Overview.
- Ensure each member is trained to send SMS/Text Messages from Winlink.
- Ensure each member has ability to receive APRS messages (APRS.FI, APRSIS32, etc).
- Determine areas to focus on for 2024.

Cherokee ARES  
14OCT2023 SET  
Instructions/Tasks

Task	POC	Title	Status	Details
1	W1JKU	NET Check-In		All members check into the NET for SET Mobilization and Deployment Instructions, <b>STARTEX: 06:00am EST</b> Initial Activation Call will occur from W1JKU at the EOC, then Command and Control will be transferred to Remote Command POST WX4AUX, colocated at William G Long Senior Center.
2	W1JKU	Winlink Checkin		<b>All Members requested to send Winlink Check In with Comment on Capabilities:</b> 1- VHF/UHF/HF Capabilities operating on Remote Power 2- Ability to Deploy and Self sustain for 48hours 3- Concerns 4- Members attempt to capture APRS Message via RF/Internet if needed from both W1JKU and WA4EOC and respond as requested.
3	KM4IEH & N4RFC	Cmd Post VHF/HF		1- Establish VHF Command Post (WX4AUX) relieving W1JKU from EOC NLT 08:30 2- Establish VHF via KC4AQS and attempt to check in with NWGA District NLT 10:00 3- Establish HF40M- 7.287.500 and attempt Check with NWGA or anyone else NLT 11:00
4	KO4IFY	Mobilization Sign-In		1- All Members Sign In 2- All Members review contact information on file FSD98 (Phone, Email, Capability). If inaccurate, provide new FSD-98. (Blank forms will be provided)
5	KJ4UC, K9APD, KD4KHO, KO4UQF	Mobilization Inspection		<b>Mobilize with required items:</b> 1. Cherokee ARES Operations Binder. 2. Cherokee ARES ICS 217A dated 7 Oct 2022. 3. ARES Emergency Communicator Individual Task Book. 4. Printed Copies of your Amateur Radio License and Copies of Certified Training (These items should be in your ARES Operations Binder). 5. Mobile Radio/HT with instruction Manual and battery power. 6. Each member program HT on site manually with Frequency provided and Check-in with POC.
6	W1JKU	Training		Training Program to be Conducted
7	W1JKU	Demobilize		<b>Demobilize Tasks to be Completed by 16:00 14OCT2023</b> 1- Send APRS message to W1JKU if capable. 2- Send SMS message to W1JKU 404-710-9630-Verizon using Winlink 3- Send Winlink with Lessons Learned/AAR as well as Status/Details on APRS W1JKU. 4.- Send Winlink Check-Out Form when you have returned to your homestation confirming you have returned safely from this drill.

**Instructions:**

- 1- All Cherokee ARES members are required to participate on all tasks. Any Non-ARES Member, but licensed Amateur Radio Operator is encouraged to participate.
- 2- Any subtasks that you are not comfortable on, should be noted in your AAR so that we can build a plan to address over the coming months.

# Send SMS via Winlink

QUICK MESSAGE	
<a href="#">Load Quick Message Data</a>	
<small>This form generates a short text message that can be sent to an email and/or SMS address. The sender is responsible for knowing the carrier of the recipient when using SMS messaging. The carrier list contains the most common primary carriers in the US and Canada and is for information only. No resellers listed. Use at your own discretion and risk. No delivery guarantee is made or implied.</small>	
Send to address:	<input type="text" value="4047109630@vzwpx.com;"/>
Add a SMS number:	<input type="text" value="4047109630"/> Carrier: <input type="text" value="Verizon (MMS)"/> <a href="#">Click to add SMS phone</a>
From:	<input type="text" value="Rob"/> Date/Time: <input type="text" value="10/11/2023 21:03"/>
Subject:	<input type="text" value="Test Quick Message"/>
Message	Character count: <input type="text" value="89"/>
<input type="text" value="Quick Message Form found under Standard Templates --&gt; GENERAL Forms --&gt; Quick Message.txt"/>	
<a href="#">Submit</a>	<a href="#">Save Quick Message Data</a> <a href="#">Reset Form</a>
V. 11.01	

Form can be found under:

- Standard Templates
- GENERAL Forms
- Quick Message.txt



# Send Check-Out Form upon Returning Home

**Winlink Check-out**

[Setup](#) Click to add your agency/group name to title[Load Check-out Data](#)[Form Info](#)

---

**1. STATION**  
**a. Date/Time:**   
**b. To:**  [Clear ALL "Send To" Entries.](#)  
**c. From:**     **d. Station Contact Name:**     **e. Initial Operator(s):**

---

**2. SESSION**  
**a. Type:**  EXERCISE    REAL EVENT    **b. Service:**  AMATEUR    SHARES    **c. Band:**  NA    Telnet    HF    VHF    UHF    SHF  
**d. Session:**  Telnet    Packet    Pactor    Robust Packet    Ardop    VARA HF    VARA FM    Iridium Go    Mesh

---

**3. LOCATION**  
**a. Location:**   
**b. LATITUDE:**     **c. LONGITUDE:**     **d. MGRS:**     **e. GRID SQUARE:**   
**LAT/LON and MGRS default to the center of the grid square listed in Express Settings, unless a GPS is used or Lat/LON or MGRS must be entered manually. Without properly formatted GPS coordinates this form cannot be mapped in Winlink Express.**

---

**4. COMMENTS: Max Characters 500**  
Such as: On batteries. Need relief in 6 hours. A Brief SitRep. Operators Names. Special notes for next shift. Mode being used that was indicated as OTHER.

---

[Submit](#)   [Save Check-out Data](#)   [Reset Form](#)Ver 5.0.5

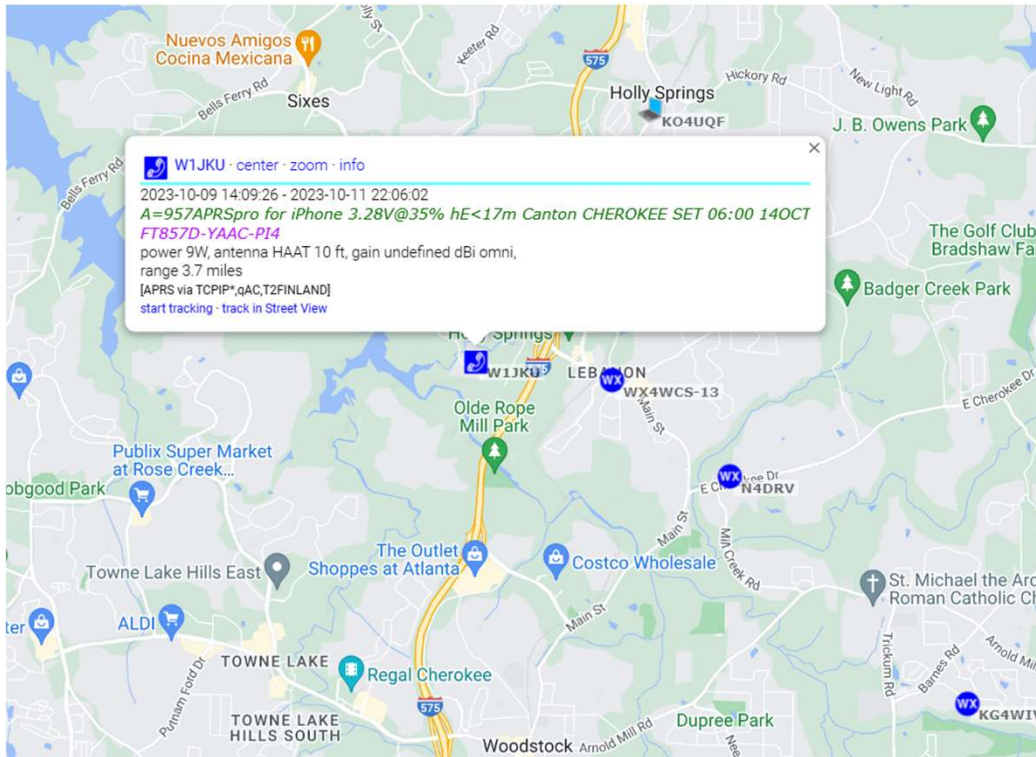
Form can be found under:  
- Standard Templates  
- GENERAL Forms  
- Winlink Check-out.txt

Session Type: EXERCISE  
Session Service: AMATEUR

# Program Radio with WX4AUX

- SET Task, Manually Program your Radio with WX4AUX Repeater under supervision of assigned ARES Grader.
- This Repeater will become the Primary ARES Repeater in the coming weeks, leaving us with two Alternate Repeaters WA4EOC and KG4VUB.
- Receive Frequency: 145.190
- Transmit Frequency: 144.590 (Minus Duplex)
- PL Tone 107.2

# APRS



- Open a browser on your computer or phone
- URL: APRS.FI
- Look for W1JKU and Add Message to your Winlink Checkout Form.



Participate

Give Back to the Community

Have Fun and Advance your Skills



Thank you!